



GREEN HILLS

BLACKBURN

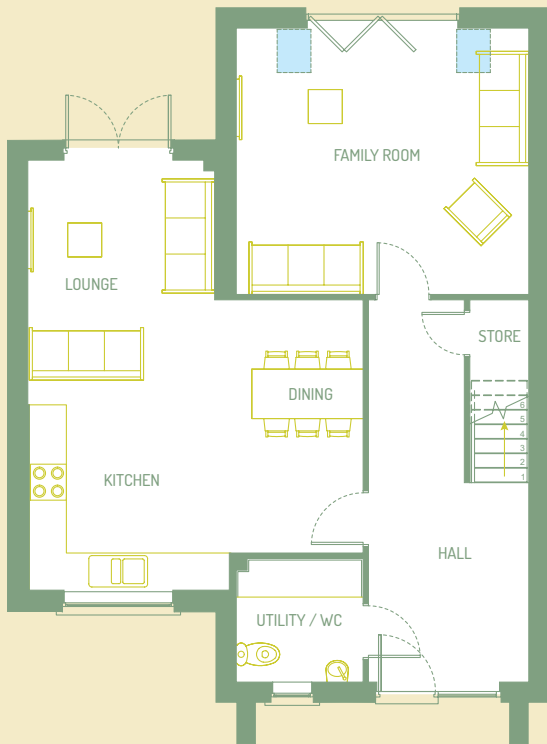


KINGSWOOD
HOMES

BYRE B

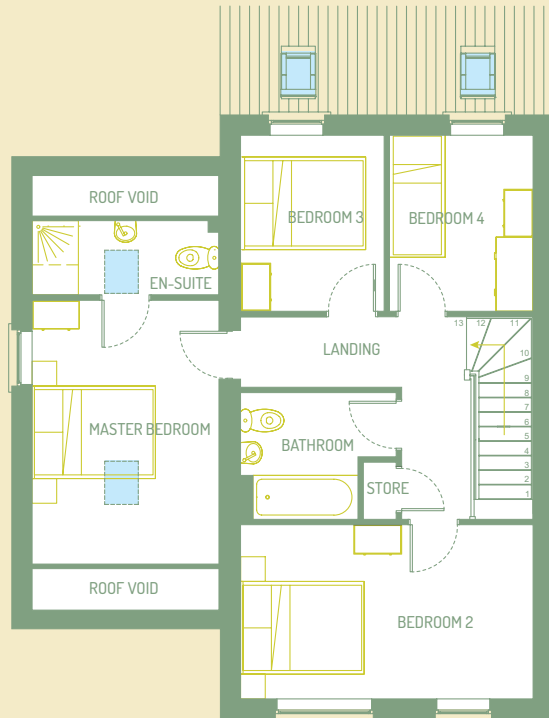
4 Bed Detached

136 m²
1469 ft²



GROUND FLOOR

Family Room	4785mm x 4349mm	15ft 8ins x 14ft 3ins
Kitchen / Dining / Lounge	7035mm x 5465mm	23ft 0ins x 17ft 11ins
Utility / WC	2078mm x 2037mm	6ft 9ins x 6ft 8ins



FIRST FLOOR

Master Bedroom	4297mm max x 3072mm	14ft 1ins max x 10ft 0ins
En-suite	3072mm x 1225mm	10ft 0ins x 4ft 0ins
Bedroom 2	4785mm x 2856mm	15ft 8ins x 9ft 4ins
Bedroom 3	2887mm x 2361mm	9ft 5ins x 7ft 8ins
Bedroom 4	2887mm x 2361mm	9ft 5ins x 7ft 8ins
Bathroom	2557mm x 2075mm	8ft 5ins x 6ft 9ins

A fantastic 4 bedroom detached family home designed with modern family living in mind, including a delightful open plan living area comprising kitchen, dining area and lounge / sitting area to the ground floor.

A further separate family room with bi-folding doors opening onto the garden provides the perfect place to relax. Add to this

a large reception hall and laundry room with WC, the Byre B has everything you could possibly need.

To the first floor the master bedroom boasts an en-suite with three further good sized bedrooms and a family bathroom resulting in a home that is designed with both style and practicality at its core.